

i =	12	16	20	25	35	40	50	70	100
nominal output torque (Nm)	43	52	52	47	47	52	47	42	18
max. acceleration torque (Nm)	57	71	71	62	62	71	62	52	28
emergency torque (Nm)	72	84	84	84	84	84	84	84	62

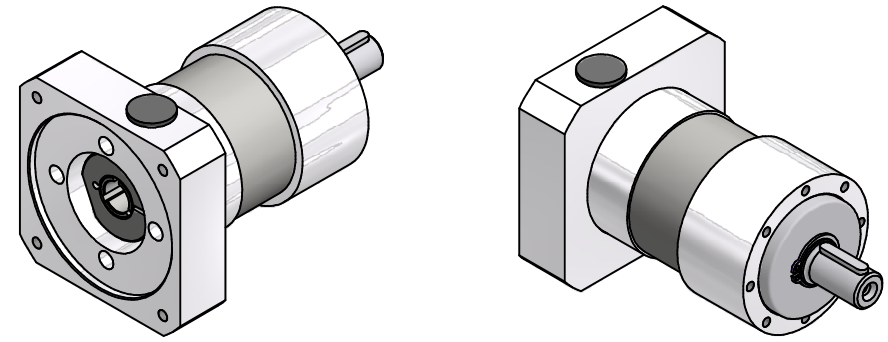
output shaft bearing: grooved ball bearing 2RS

- max. radial load: 1.450N bei n2=100 1/min Lh > 10.000h
- max. axial load: 1.550N bei n2=100 1/min Lh > 10.000h
- reference to shaft center at temp. = 30°C

straight-toothed planetary gearbox  
backlash at output shaft: ≤ 12 arcmin  
lifetime: > 30.000h  
efficiency: by rated load 92% (depends on ratio)  
lubrication: lifetime-lubrication  
nominal output torque at n1 = 3.000 1/min  
operating temperature: -20°C bis +90°C  
motor mounting: M2 (stocked driving pinion)

- torque of clamping screw: 6Nm

operation mode: S1  
operation ratio: cB1  
protection system: IP54



consider mounting instruction  
subject to modifications

Allgemein-toleranzen ISO 2768-mK		Kanten ISO 13715	Maßstab 1:1	(Gewicht)
Verwendungsbereich		Datum 14.04.2020	Name Kanz	
		Bearb. 13.05.2020	Name Kanz	
		Freig.	Name Kanz	
		Kd-Fr.	Name Kanz	
EPL 70X/2			Blatt 2 / 2	
400603100-2-E14-K-M468			A2	
Zust.	Änderungen	Datum	Name	Ursprung

