

i =	12	16	20	25	35	40	50	70	100
nominal output torque (Nm)	110	139	139	118	118	139	118	100	64
max. acceleration torque (Nm)	160	163	163	138	138	163	138	125	80
emergency torque (Nm)	160	216	216	216	216	216	216	216	160

output shaft bearing: grooved ball bearing 2RS

- max. radial load: 1.800N bei n2=100 1/min Lh > 10.000h
- max. axial load: 3.000N bei n2=100 1/min Lh > 10.000h
- reference to shaft center at temp. = 30°C

straight-toothed planetary gearbox

backlash at output shaft: ≤ 12 arcmin

lifetime: > 30.000h

efficiency: by rated load 92% (depends on ratio)

lubrication: lifetime-lubrication

nominal output torque at n1 = 3.000 1/min

operating temperature: -20°C bis +90°C

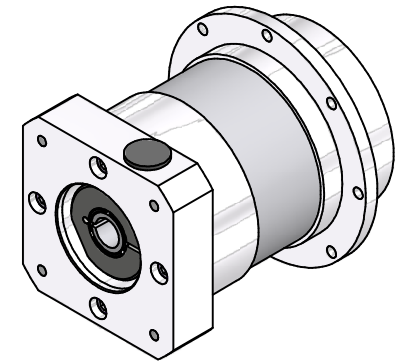
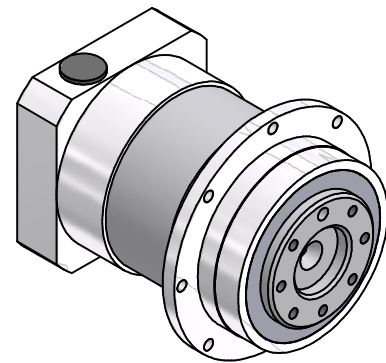
motor mounting: M2 (stocked driving pinion)

- torque of clamping screw: 9Nm

operation mode: S1

operation ratio: cB1

protection system: IP65



consider mounting instruction
subject to modifications

Allgemein- toleranzen ISO 2768-mK		Kanten ISO 13715	Maßstab 1 : 1 [Gewicht]
Verwendungsbereich		Datum 05.04.2022	Name Kanz
		Bearb. 05.04.2022	Name Kanz
		Freig.	
		Kd-Fr.	
EPLFE90/2			Blatt 2 / 2
40090301-2-E14-K-M403			A2
Zust.	Änderungen	Datum	Name
			Ursprung



40090301-2-E14-K-M403