

| | | | | | | | | | |
|-------------------------------|-----|-----|-----|-----|-----|-----|-----|-----|-----|
| i = | 12 | 16 | 20 | 25 | 35 | 40 | 50 | 70 | 100 |
| nominal output torque (Nm) | 110 | 139 | 139 | 118 | 118 | 139 | 118 | 100 | 64 |
| max. acceleration torque (Nm) | 160 | 163 | 163 | 138 | 138 | 163 | 138 | 125 | 80 |
| emergency torque (Nm) | 160 | 216 | 216 | 216 | 216 | 216 | 216 | 216 | 160 |

output shaft bearing: grooved ball bearing 2RS

- max. radial load: 1.800N bei n2=100 1/min Lh > 10.000h
- max. axial load: 3.000N bei n2=100 1/min Lh > 10.000h
- reference to shaft center at temp. = 30°C

straight-toothed planetary gearbox

backlash at output shaft: ≤ 12 arcmin

lifetime: > 30.000h

efficiency: by rated load 92% (depends on ratio)

lubrication: lifetime-lubrication

nominal output torque at n1 = 3.000 1/min

operating temperature: -20°C bis +90°C

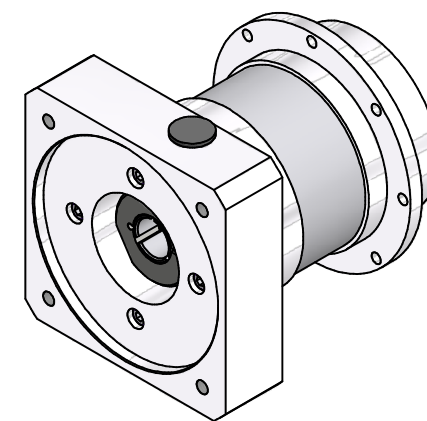
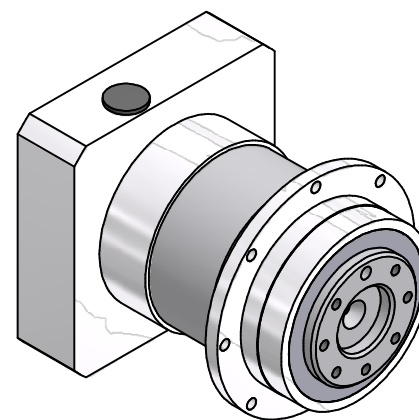
motor mounting: M2 (stocked driving pinion)

- torque of clamping screw: 9Nm

operation mode: S1

operation ratio: cB1

protection system: IP65



consider mounting instruction
subject to modifications

| | | | |
|---|------------|------------------------|----------------------------|
| Allgemein- toleranzen ISO 2768-mK | | Kanten ISO 13715 | Maßstab 1 : 1 [Gewicht] |
| Verwendungsbereich | | Datum 04.04.2022 | Name Kanz |
| | | Bearb. 04.04.2022 | Name Kanz |
| | | Freig. | |
| | | Kd-Fr. | |
| EPLFE90/2 | | | Blatt 2 / 2 |
| 40090301-2-E19-K-M402 | | | A2 |
| Zust. | Änderungen | Datum | Name |
| | | | Ursprung |

