

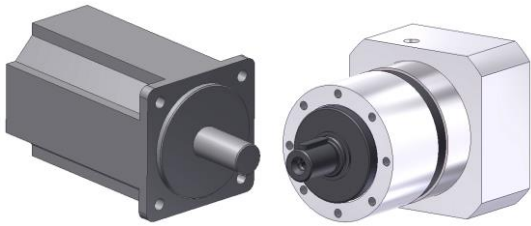
Assembly Instruction

EPL – gearbox

EPL50

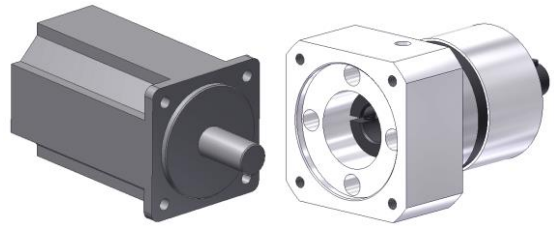


1.



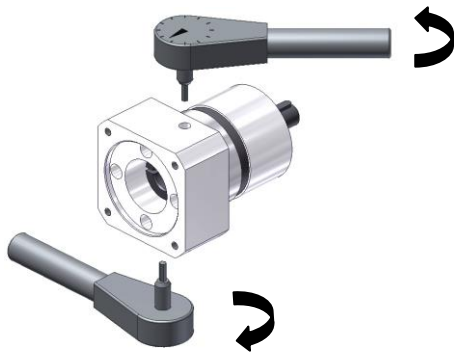
DIN 42955-N
select correct motor (without keyway)
select correct gearbox?

2.



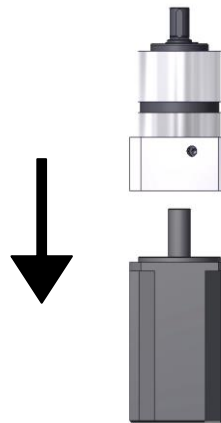
free mounting parts from grease
remove potential damages

3.



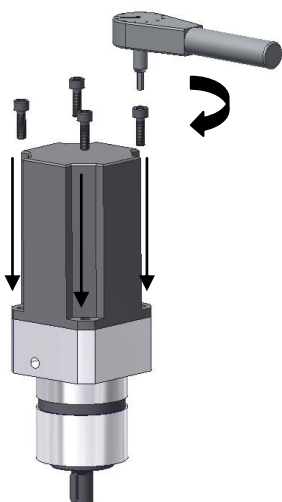
position clamping hub with clamping screws
open both clamping screws

4.



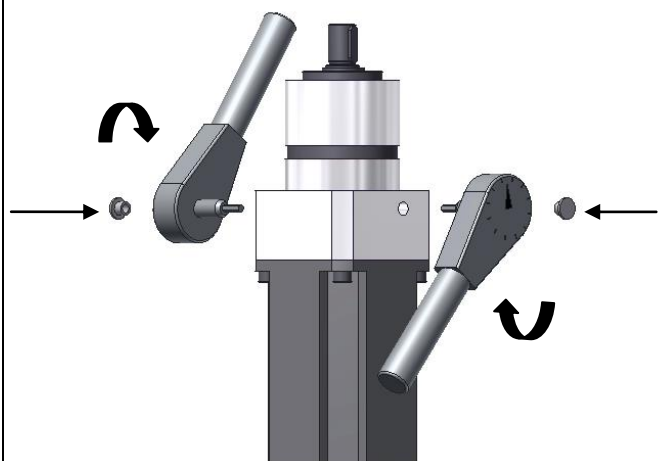
preferred mounting direction:
vertical fit motor in gearbox

5.



screws must be secured
tighten crosswise AF 3mm
screw tightening torque M_A 3,5 Nm

6.



tighten clamping screws in clamping hub
AF 3mm, tightening torque M_A 3,5 Nm
install sealing plugs