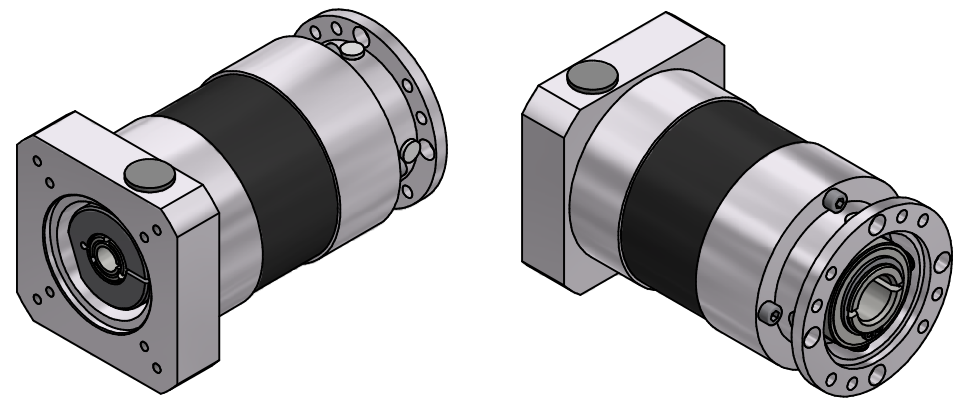


i =	12	16	20	25	35	40	50	70	100
nominal output torque (Nm)	55	65	65	65	65	65	65	65	65
max. acceleration torque (Nm)	75	80	80	80	80	80	80	80	80

output shaft bearing: deep groove ball bearings 2RS
 straight-toothed planetary gearbox
 backlash at output shaft: ≤ 14 arcmin
 lifetime: > 30.000h
 efficiency: by rated load 92% (depends on ratio)
 lubrication: lifetime-lubrication
 nominal output torque at n1 = 3.000 1/min
 operating temperature: -20°C bis +90°C
 motor mounting: M2 (stocked driving pinion)

- torque of clamping screw: 9Nm

 operation mode: S1
 operation ratio: cB1
 protection system: IP54



consider mounting instruction
subject to modifications

Allgemein-toleranzen		Kanten	Maßstab	1 : 1	(Gewicht)
ISO 2768-mK		ISO 13715	Arbeitsstoff, Halbzeug	Generisch	
Verwendungsbereich		Datum	Rohteil-Nr.		
		29.06.2020	Modell- oder Gesenk-Nr.		
		02.05.2022	EPL-H84/2		
		02.05.2022	40080323-2-E11-K-M436		
			Blatt 2 / 2		
			A2		
Zust.	Änderungen	Datum	Name	Ursprung	

