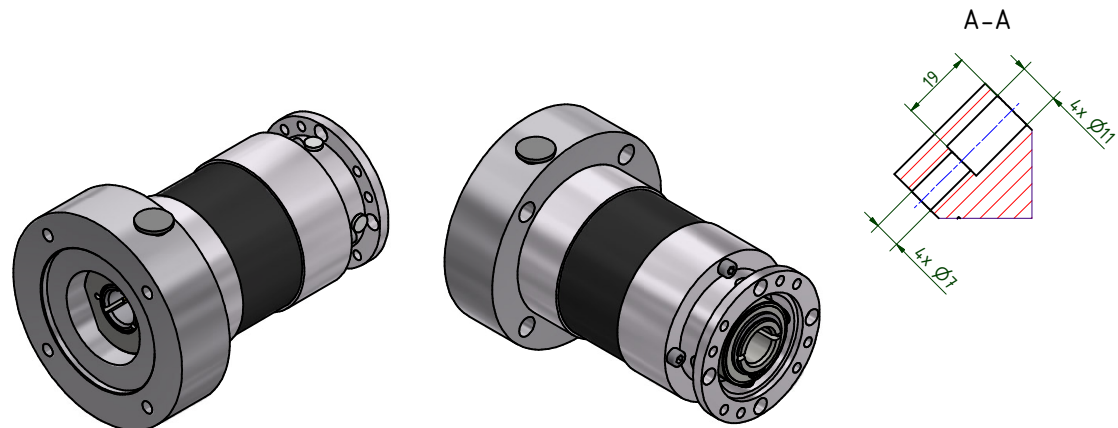


i =	12	16	20	25	35	40	50	70	100
nominal output torque (Nm)	55	65	65	65	65	65	65	65	65
max. acceleration torque (Nm)	75	80	80	80	80	80	80	80	80

output shaft bearing: deep groove ball bearings 2RS
 straight-toothed planetary gearbox
 backlash at output shaft: ≤ 14 arcmin
 lifetime: $> 30.000h$
 efficiency: by rated load 92% (depends on ratio)
 lubrication: lifetime-lubrication
 nominal output torque at $n_1 = 3.000$ 1/min
 operating temperature: $-20^\circ C$ bis $+90^\circ C$
 motor mounting: M2 (stocked driving pinion)

- torque of clamping screw: 9Nm

operation mode: S1
 operation ratio: cB1
 protection system: IP54



consider mounting instruction
 subject to modifications

Allgemein- toleranzen ISO 2768-mK		Kanfen ISO 13715	Maßstab 1 : 1 Werkstoff, Halbzeug Default	(Gewicht)
Verwendungsbereich		Datum Erst: 02.03.2022 Bearb.: 02.05.2022 Freg. Kg-Fr.	Name JF Kanz.	EPL-H84/2
Zust.		Änderungen		Datum
Name		Ursprung		Blatt 2 / 2 A2
40080323-2-E19-K-M405		EISELE		