

i =	3	4	5	7	10
nominal output torque (Nm)	75	100	85	54	40
max. acceleration torque (Nm)	120	130	110	100	75
emergency torque (Nm)	160	216	216	216	160

output shaft bearing: grooved ball bearing 2RS

- max. radial load: 1.800N bei n2=100 1/min Lh > 10.000h
- max. axial load: 3.000N bei n2=100 1/min Lh > 10.000h
- reference to shaft center at temp. = 30°C

straight-toothed planetary gearbox

backlash at output shaft: ≤ 8 arcmin

lifetime: > 30.000h

efficiency: by rated load 94% (depends on ratio)

lubrication: lifetime-lubrication

nominal output torque at n1 = 3.000 1/min

operating temperature: -20°C bis +90°C

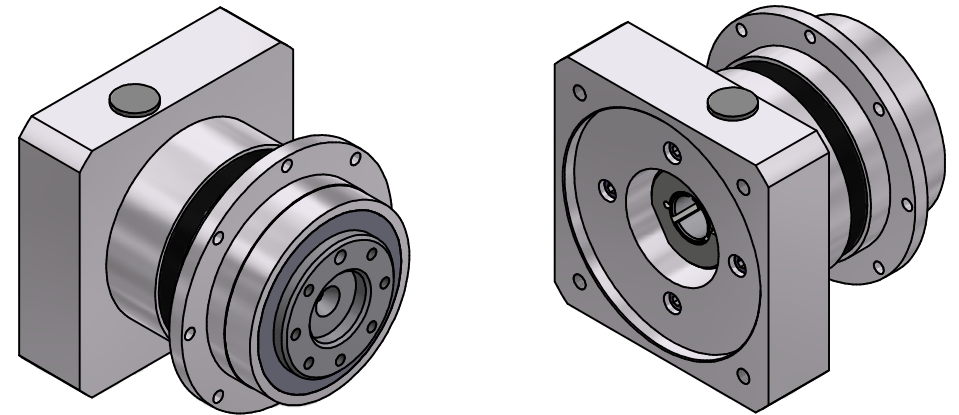
motor mounting: M2 (stocked driving pinion)

- torque of clamping screw: 9Nm

operation mode: S1

operation ratio: cB1

protection system: IP65



consider mounting instruction
subject to modifications

Allgemein-		Kanten	Maßstab	(Gewicht)
toleranzen		ISO	1 : 1	
ISO 2768-mK		13715	Werkstoff, Halbzeug	
Verwendungsbereich		Datum	Rohteil-Nr.	
		29.03.2022	Modell- oder Gesenk-Nr.	
		Name		
		Kanz.	EPLFE90/1	
		Erst		
		Bearb.		
		04.04.2022		
		Name		
		Kanz.		
		Freig.		
		Kd-Fr.		
		E. S. P. E. L. E.		Blatt
		40090300-1-E19-K-M402		2 / 2
				A2
Zust.	Änderungen	Datum	Name	Ursprung