

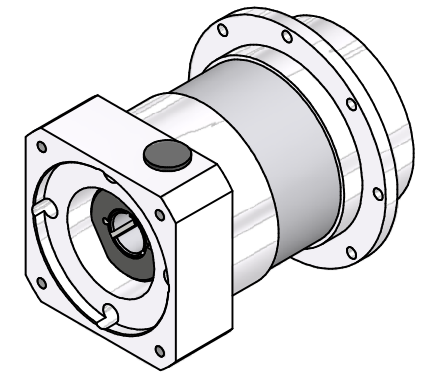
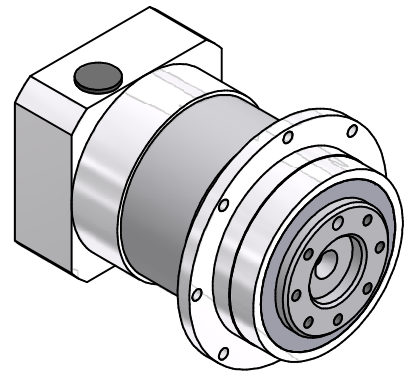
i =	12	16	20	25	35	40	50	70	100
nominal output torque (Nm)	110	139	139	118	118	139	118	100	64
max. acceleration torque (Nm)	160	163	163	138	138	163	138	125	80
emergency torque (Nm)	160	216	216	216	216	216	216	216	160

output shaft bearing: grooved ball bearing 2RS

- max. radial load: 1.800N bei n2=100 1/min Lh > 10.000h
- max. axial load: 3.000N bei n2=100 1/min Lh > 10.000h
- reference to shaft center at temp. = 30°C

straight-toothed planetary gearbox
backlash at output shaft: ≤ 12 arcmin
lifetime: > 30.000h
efficiency: by rated load 92% (depends on ratio)
lubrication: lifetime-lubrication
nominal output torque at n1 = 3.000 1/min
operating temperature: -20°C bis +90°C
motor mounting: M2 (stocked driving pinion)

- torque of clamping screw: 9Nm
- operation mode: S1
operation ratio: cB1
protection system: IP65



consider mounting instruction
subject to modifications

Allgemein- toleranzen ISO 2768-mK		Kanten ISO 13715	Maßstab 1:1 [Gewicht]
Verwendungsbereich		Datum 03.11.2020	Name Kanz
		Bearb. 16.11.2020	Name Kanz
		Freig.	
		Kd-Fr.	
EPLFE90/2			Blatt 2 / 2
40090301-2-E19-K-M475			A2
Zust.	Änderungen	Datum	Name
			Ursprung

