

i =	12	16	20	25	35	40	50	70	100
nominal output torque (Nm)	43	52	52	47	47	52	47	42	18
max. acceleration torque (Nm)	57	71	71	62	62	71	62	52	28
emergency torque (Nm)	72	84	84	84	84	84	84	84	62

output shaft bearing: grooved ball bearing 2RS

- max. radial load: 600N bei n2=100 1/min Lh > 10.000h
- max. axial load: 1.200N bei n2=100 1/min Lh > 10.000h
- reference to shaft center at temp. = 30°C

straight-toothed planetary gearbox

backlash at output shaft: ≤ 12 arcmin

lifetime: > 30.000h

efficiency: by rated load 92% (depends on ratio)

lubrication: lifetime-lubrication

nominal output torque at n1 = 3.000 1/min

operating temperature: -20°C bis +90°C

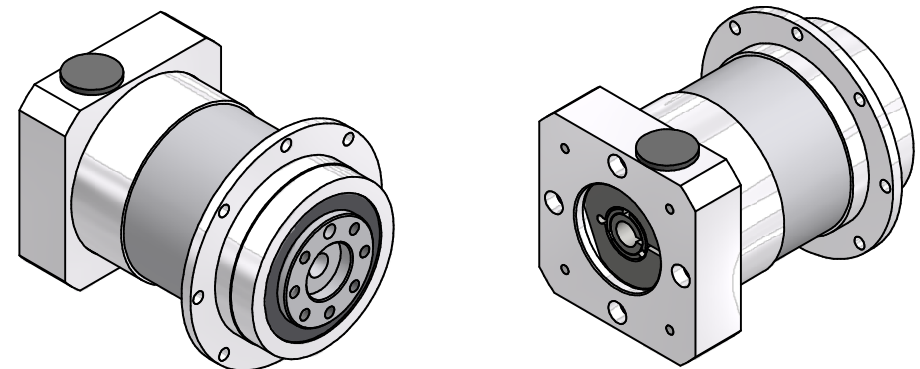
motor mounting: M2 (stocked driving pinion)

- torque of clamping screw: 6Nm

operation mode: S1

operation ratio: cB1

protection system: IP65



consider mounting instruction  
subject to modifications

Allgemein-		Kanfen	Maßstab	1 : 1	(Gewicht)
toleranzen		ISO			
ISO 2768-mK		13715	Werkstoff, Halbzeug		
Verwendungsbereich		Rohteil-Nr.		EPLFE64/2	
		Modell-oder Gesenk-Nr.			
		Datum	Name		
		28.02.2022	Kanz		
		Bearb.	Kanz		
		28.02.2022			
		Freig.			
		Kd-Fr.			
		E. FISLER		46400301-2-E9-K-M4.05	
				Blatt	
				2 / 2	
				A2	
Zust.	Änderungen	Datum	Name	Ursprung	